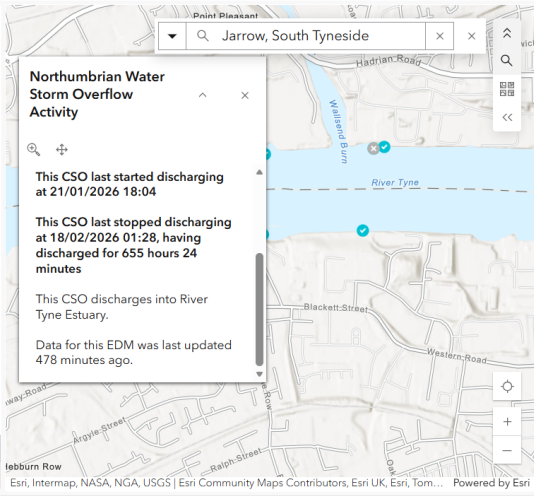


What is this data?

All English water companies now share near real-time Event Discharge Monitoring (EDM) discharge alerts. This data is available via the Water UK National Storm Overflow Hub, and is also published as layers in ArcGIS Online. Scottish Water make data on their CSOs that have real-time monitoring available via an API. We have pulled all of this data into one map. This data comes directly from the EDMs - discharges have not been verified. For more information on EDM data, please visit the [Understanding the data](#) section of this page.

Note that this map only shows EDMs that are operated by English water companies and that are in England and EDMs in Scotland that have real-time monitoring from Scottish Water. Data for Wales can be found on the storm overflow maps on the [Dŷr Cymru Welsh Water](#) and the [Hafren Dyfrdwy](#) websites.

Water by Water Company
Category selected



15.8k Total CSOs

842
5% discharging now

2.1k
13% discharged in past 48 hrs

12.4k
78% not discharging

Includes offline monitors operated by Anglian Water and Southern Water

529
3% currently offline

